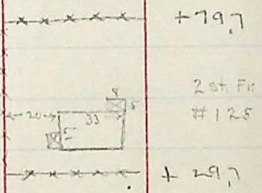


79
 Ave
 +32
 78
 Patterson
 77



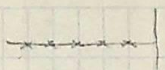
Wall 76 + 90.2 Ave.

July 29, 1905

Passionary line on Patterson ave
 Wall to Washington

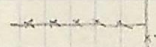
9.74 P Int.
 H. B. S. chain } 1 P. m. to 3 P. m.
 6.6 B. "

✓
 100.5



83

✓
 +94.3



82

1st Fr.
 #152



✓
 +46.0

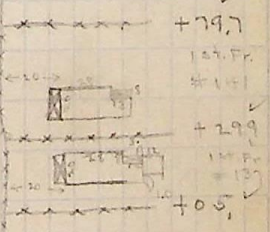
✓
 +29.9

81

✓
 +31

✓
 +106

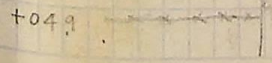
80



+42.0

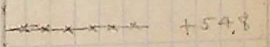
2nd Fr. #125

+114



+05.0

79 +07.



+54.8

